



6.4 FINANCIAL MANAGEMENT & RESOURCE MOBILIZATION



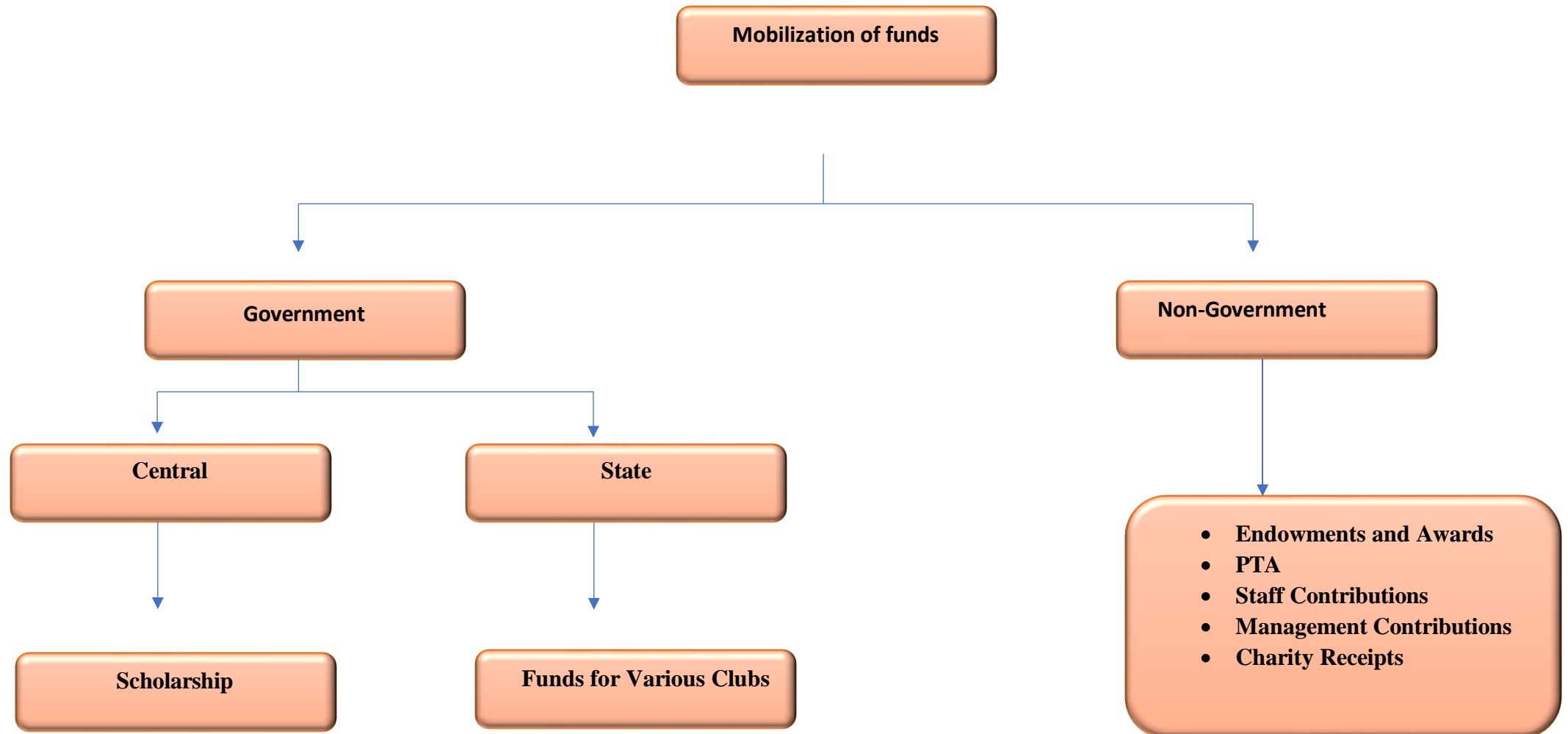
EMMANUEL COLLEGE VAZHICHAL



6.4.1: INSTITUTION HAS STRATEGIES FOR MOBILIZATION AND OPTIMAL UTILIZATION OF RESOURCES AND FUNDS FROM VARIOUS SOURCES(GOVERNMENT/ NONGOVERNMENT ORGANIZATIONS) AND IT CONDUCTS FINANCIAL AUDITS REGULARLY(INYERNAL AND EXTERNAL)

6.4.1 Institution has strategies for mobilization and optimal utilization of resources and funds from various sources (government/ nongovernment organizations) and it conducts financial audits regularly (internal and external)

6.4.1: Institution has strategies for mobilization and optimal utilization of resources and funds from various sources



AUDIT REPORT



EMMANUEL COLLEGE

VAZHICHAL

KUDAPPANAMOODY P.O., THIRUVANANTHAPURAM - 695 505

(Affiliated to the University of Kerala)

Phone : 0471-2248113, 2248416

e-mail : emmanuelcollegevm@gmail.com

Website : www.emmanuelcollege.ac.in

Ref. No.

EC/NAAC/01/2024

04.03.2024

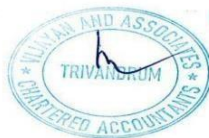
CERTIFICATE

This is to certify that the following amounts have been spent for 'Infrastructure Augmentation', 'Maintenance of Physical Facilities' and 'Maintenance of Academic Support Facilities' for the years 2018-'19 to 2022- '23. The said amounts have been extracted from the Receipts And Payments Accounts and Accounting Records of Emmanuel College, Vazhichal, Thiruvananthapuram for the said period.

Year wise Audited Statement

Year	Infrastructure Augmentation (Amount in Rs. Lakhs)	Maintenance of Physical Facilities (Amount in Rs. Lakhs)	Maintenance of Academic Support Facilities (Amount in Rs. Lakhs)
2022-2023	4636726	930545	4261913
2021-2022	1973173	1137479	3525596
2020-2021	371832	2112748	2831606
2019-2020	740339	2050516	3567053
2018-2019	42016839	555665	4667421
Total	49738909	6786953	18853589

04/03/24



For VIJAYAN AND ASSOCIATES
CHARTERED ACCOUNTANTS
Firm Reg. No: 007442S

N. Vijayan M.Com., FCA, DISA
Mem No:203386 (Partner)

Dr. J Vijayakumar

Principal

EMMANUEL COLLEGE
Vazhichal, Kudappanamoodu
Thiruvananthapuram-695505

EMMANUEL COLLEGE VAZHICAL

NAAC CRITERA 4

Year wise Audited Statement

Year	Infrastructure Augmentation (Amount in Lakhs)	Maintenance of Physical Facilities (Amount in Lakhs)	Maintenance of Academic Support Facilities (Amount in Lakhs)
2022-2023	4636726	930545	4261913
2021-2022	1973173	1137479	3525596
2020-2021	371832	2112748	2831606
2019-2020	740339	2050516	3567053
2018-2019	42016839	555665	4667421
Total	49738909	6786953	18853589

Dr. J Vijayakumar
Principal

Principal
EMMANUEL COLLEGE
Vazhichal, Kudappanamoodu
Thiruvananthapuram-695505



For VIJAYAN AND ASSOCIATES
CHARTERED ACCOUNTANTS
Firm Reg No: 007442S

N. Vijayan M.Com, FCA, DIS
Mem No:203386 (Partner)



4.1.2. Percentage of expenditure for Infrastructure Development and Augmentation expense

Year 2022-2023		
Head of Expenditure	Item of Expenditure	Amount (INR in lakhs) ₹.
	Building	396693
	Furniture And Fittings	27000
	Lab Equipments	808772
	Electrical Fittings	2853213
	Library Books	422100
	Others-Equipments	128948
	Total	4636726

Year 2021-2022		
Head of Expenditure	Item of Expenditure	Amount (INR in lakhs) ₹.
	Furniture	504340
	Lab Equipments	1128200
	Books And Things	260733
	Others-Equipments	79900
	Total	1973173

Year 2020-2021		
Head of Expenditure	Item of Expenditure	Amount (INR in lakhs) ₹.
	Furniture And Fittings	260000
	Lab Equipments	62178
	Books And Things	20454
	Others-Equipments	29200
	Total	371832

Year 2019-2020		
Head of Expenditure	Item of Expenditure	Amount (INR in lakhs) ₹.
	Furniture	175000
	Lab Equipments	193280
	Books And Things	276717
	Others-Equipments	95342
	Total	740339

Year 2018-2019		
Head of Expenditure	Item of Expenditure	Amount (INR in lakhs) ₹.
	Civil Works	1275519
	Building	38282843
	Furniture	47700
	Lab Equipments	1181273
	Books And Things	613554
	Electrical Fittings	10950
	Others-Equipments	605000
	Total	42016839



For VIJAYAN AND ASSOCIATES
CHARTERED ACCOUNTANTS
Firm Reg No: 007442S
N. Vijayan M.Com, FCA, DISA
Mem No: 203386 (Partner)



Dr. J Vijayakumar
Principal

Principal
EMMANUEL COLLEGE
Vazhichal, Kudappanamoodu
Trivuranthapuram-695505

4.4.1.Percentage of expenditure incurred on maintenance of Physical Facilities

Year 2022-2023		
Head of Expenditure	Item of Expenditure	Amount (INR in lakhs) Rs.
	Cleaning Charges And Materials	34597
	Gardening Expenses	124629
	Grains to Birds	29340
	Lab Materials	96480
	Sports Expenses	99400
	Repairs And Maintenance -Building	248266
	Computer And Other Items	297833
	Total	930545
Year 2021-2022		
Head of Expenditure	Item of Expenditure	Amount (INR in lakhs) Rs.
	Gardening Expenses	107300
	Grains to Birds	24815
	Lab Materials	396971
	Sports Expenses	38460
	Cleaning Charges And Materials	28504
	Repairs And Maintenance -Building	303484
	Computer And Other Items	237945
	Total	1137479
Year 2020-2021		
Head of Expenditure	Item of Expenditure	Amount (INR in lakhs) Rs.
	Cleaning Charges And Materials	23604
	Gardening Expenses	30800
	Grains to Birds	27984
	Lab Materials	41292
	Repairs And Maintenance -Building	1922523
	Computer And Other Items	66545
	Total	2112748
Year 2019-2020		
Head of Expenditure	Item of Expenditure	Amount (INR in lakhs) Rs.
	Cleaning Charges And Materials	48620
	Gardening Expenses	139802
	Grains to Birds	21930
	Lab Materials	567108
	Sports Expenses	41590
	Repairs And Maintenance -Building	722377
	Other Expenses	509089
	Total	2050516
Year 2018-2019		
Head of Expenditure	Item of Expenditure	Amount (INR in lakhs) Rs.
	Cleaning Charges And Materials	26586
	Gardening Expenses	71740
	Grains to Birds	16400
	Lab Materials	218295
	Sports Expenses	58050
	Repairs And Maintenance -Building	41294
	Other Expenses	123300
	Total	555665



 N. Vijayan M.Com., FCA, DISA

 Mem No:203306 (Partner)

Principal

 MANUEL COLLEGE

 Vazhichal, Kudappanamoodu

 Iruvananthapuram-695505

 Dr. J Vijayakumar

 Principal

4.4.1.Percentage of expenditure incurred on maintenance of Academic Support Facilities

Year 2022-2023		
Head of Expenditure	Item of Expenditure	Amount (INR in lakhs) R ₁
	Advertisement	515033
	Electricity,Telephone etc	1061860
	Printing And Stationery	177527
	Office expense etc	897030
	Other expense	202433
	Staff Tour and Vacation allowance	386429
	Refreshments	849801
	Audit Fee And Accounting Charges	171800
	Total	4261913
Year 2021-2022		
Head of Expenditure	Item of Expenditure	Amount (INR in lakhs) R ₂
	Advertisement	441000
	Electricity,Telephone,postage etc	569923
	Printing And Stationery	291718
	Audit Fee And Accounting Charges	171800
	Travelling And Refreshment Charges	758325
	Other expense	1292830
	Total	3525596
Year 2020-2021		
Head of Expenditure	Item of Expenditure	Amount (INR in lakhs) R ₁
	Advertisement	384650
	Electricity,Telephone,postage etc	536212
	Printing And Stationery	165454
	Audit Fee And Accounting Charges	154000
	Travelling And Refreshment Charges	1074752
	Other expense	516538
	Total	2831606
Year 2019-2020		
Head of Expenditure	Item of Expenditure	Amount (INR in lakhs) R ₁
	Advertisement	363100
	Electricity,Telephone,postage etc	661889
	Printing And Stationery	75457
	Audit Fee And Accounting Charges	124500
	Travelling And Refreshment Charges	1523451
	Staff Tour Expense	209130
	Other Expenses	609526
	Total	3567053
Year 2018-2019		
Head of Expenditure	Item of Expenditure	Amount (INR in lakhs) R ₂
	Advertisement	285296
	Electricity,Telephone,postage etc	621257
	Printing And Stationery	283551
	Audit Fee And Accounting Charges	124500
	Travelling And Refreshment Charges	1797754
	Staff Tour Expense	259500
	Other Expenses	1295563
	Total	4667421

For
N. Vijayan M.Com, FCA, DISA
Mem No:203386 (Partner)

Principal
Dr. J Vijayakumar
Principal

Principal
EMMANUEL COLLEGE
Vazhichal,Kudappanamoodu
Niruvananthapuram-695505

SCOLARSHIPS & FREESHIPS

Sl. No	Name of the Scheme	Number of Students	Amount	Link
2018-19				
1	Post Matric scholarship (Fresh)	147	950000	Click here
2	Post Matric scholarship (Renewal)	156	964000	Click here
3	Central Sector scheme of scholarship (Fresh)	1	20000	Click here
4	Educational Scholarship for SC Students	9	393480	Click here
5	Freeships provided by the institution	70	889900	Click here
6	freeships provided by philanthropist	9	65000	Click here
2019-20				
1	Post Matric scholarship (Fresh)	146	920000	Click here
2	Post Matric scholarship (Renewal)	151	938000	Click here
3	Central Sector scheme of scholarship (Renewal)	2	30000	Click here
4	University merit scholarship	8	80000	Click here
5	Educational Scholarship for SC Students	3	123660	Click here
6	Freeships provided by the institution	86	1073750	Click here
7	freeships provided by philanthropist	5	25000	Click here
2020-21				
1	Post Matric scholarship (Fresh)	143	874000	Click here
2	Post Matric scholarship (Renewal)	94	588000	Click here
3	Central Sector scheme of scholarship (Renewal)	1	10000	Click here
4	University merit scholarship	3	24000	Click here
5	Educational Scholarship for SC Students	4	143380	Click here
6	Freeships provided by the institution	134	1618930	Click here

7	freeships provided by philanthropist	50	200000	Click here
2021-22				
1	Post Matric scholarship (Fresh)	172	1104000	Click here
2	Post Matric scholarship (Renewal)	121	734000	Click here
3	Central Sector scheme of scholarship (Fresh)	1	10000	Click here
4	Fisherman scholarship	11	368200	Click here
5	Educational Scholarship for SC Students	1	54220	Click here
6	Freeships provided by the institution	162	1981980	Click here
7	freeships provided by philanthropist	5	25000	Click here
2022-23				
1	Post Matric scholarship (Fresh)	163	1034000	Click here
2	Post Matric scholarship (Renewal)	110	684000	Click here
3	Central Sector scheme of scholarship (Fresh)	4	40000	Click here
4	Central Sector scheme of scholarship (Renewal)	1	20000	Click here
5	University merit scholarship	2	8000	Click here
6	Fisherman scholarship	17	545361	Click here
7	Post matric scholarship for SC students CSS (Income upto 2.5 lakh)	4	287260	Click here
8	Post matric scholarship for SC students Non CSS (Income above 2.5 lakh)	1	28910	Click here
9	Freeships provided by the institution	143	1487360	Click here
10	freeships provided by philanthropist	5	25000	Click here
11	PG Indhiragandhi Scholarship for single girl child	1	36000	Click here

NSS AUDIT REPORT

[2022-2023](#)

[2021-2022](#)

[2018-2019](#)